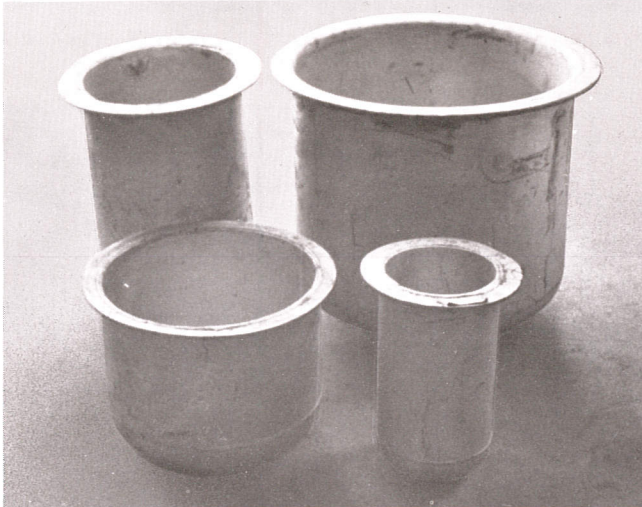




## METAL & CERAMIC POTS



Fabricated steel, special alloys, or aluminized steel round pots are available with inside diameters 6" to 30" and inside depths 10" to 36".

Pot life for any salt bath furnace depends on many variables, but even with good care and regular maintenance, pots eventually need replacement. The prudent solution is to keep a spare pot on hand. The next best answer is to order a replacement pot at the first sign of wear.

### METAL POTS

#### For Internally Heated Furnaces

At Ajax, all metal pots, are custom fabricated from quality controlled plate to our specifications. We stock a range of plate sizes. Full penetration welds are inspected and all pots are given leak tests before shipment.

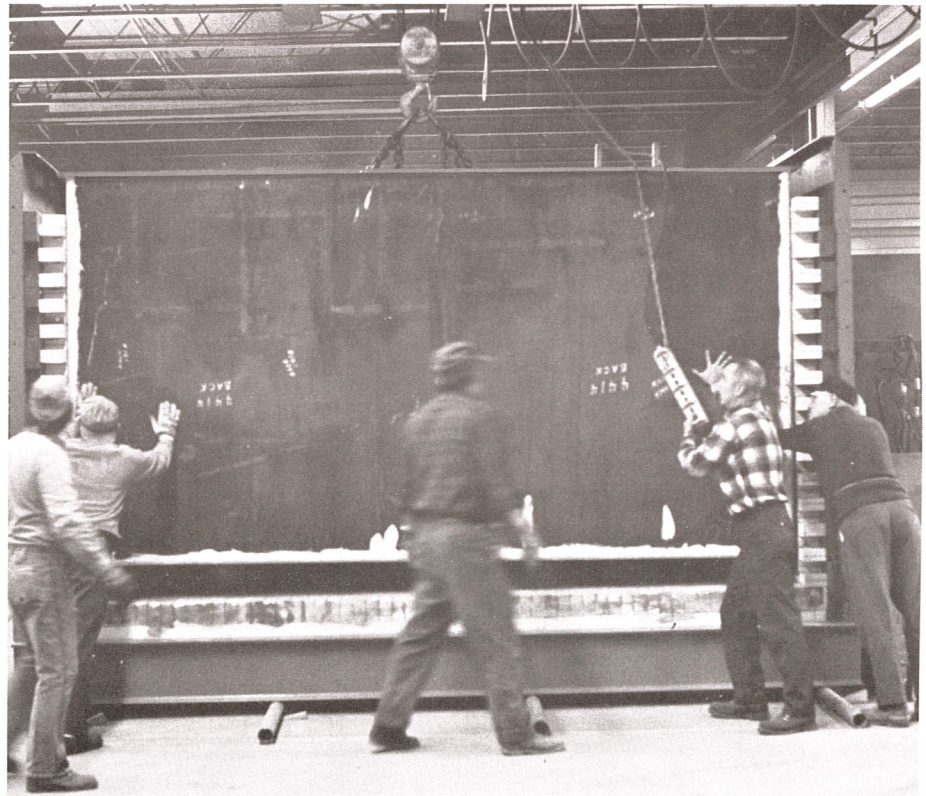
#### For Externally Heated Furnaces

(i.e. Ajax Fireball Furnaces)

Fabricated round bottom pots are fabricated from steel for low cost dependable service life up to 1200°F. For Temperatures up to 1650°F, aluminized steel round bottom pots offer service life equivalent to or better than stainless steel. Special alloy pots are available on request.



Ajax welder adding final weld to pot for Internally Heated Furnace.



Internally heated pot being installed.



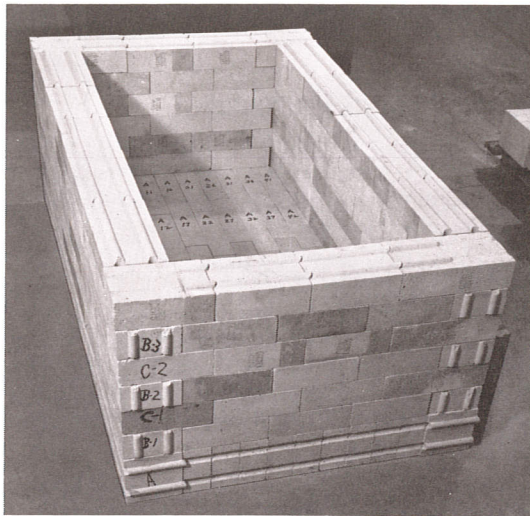
## CERAMIC POTS

Ajax ceramic pots utilize an interlocking tile design and provide life expectancies averaging three to five years at 1550° F (843° C), and two to three years at 2200° F (1204° C). Insulation between the pot and outer steel casing generally consists of castable and insulating brick that reduces the temperature gradient so that the casing surface temperature is held under 150° F (54° C).

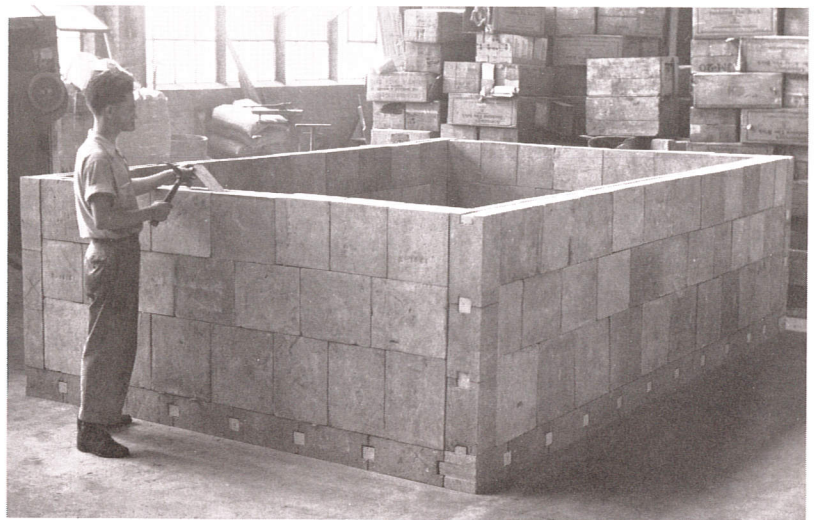
When Ajax receives an order for a replacement ceramic pot to be assembled by the customer, all brick is precut and assembled to our pot layout drawing. This greatly simplifies installation. The various tiles are match-marked for identification. For ease of assembly, the courses are packed in the order of installation. This system assures the user that the actual installation can be performed in minimum time, even with unskilled labor. If required Ajax provides factory supervision. Call Ajax for a quotation.



New electrodes were installed requiring only a partial replacement of pot and insulation.



Ajax pre-fits and match-marks the various tiles.



Preambly of a ceramic pot in the Ajax plant prior to packing and shipment.

(Clip, complete and mail to AJAX ELECTRIC COMPANY together with sketches)

☐ Proceed with replacement, use our P.O. # \_\_\_\_\_  
(or)

☐ Please advise costs and delivery

(For quick reply call **Ajax Spare Parts Dept. (215) 947-8500**)

For our Ajax Salt Bath Furnace(s), Serial Number(s) \_\_\_\_\_

### I. METAL POT

- (a) \_\_\_\_\_ Metal Pot(s) \_\_\_\_\_  
(Size, i.e. L x W x d or Dia. x D)
- (b) \_\_\_\_\_ Insulating Materials (between pot and casing) and cement.
- (c) \_\_\_\_\_ Complete Relining Materials.
- (d) \_\_\_\_\_ Rebuild at Ajax plant.

### II. CERAMIC POT

- (a) \_\_\_\_\_ Ceramic Pot(s) including match-marked key tiles and cement.
- (b) \_\_\_\_\_ Castable Insulation between pot and brick.
- \_\_\_\_\_ Castable Insulation for submerged electrodes.
- (c) \_\_\_\_\_ Insulating brick and cement.
- (d) \_\_\_\_\_ Complete Relining Materials.
- (e) \_\_\_\_\_ Rebuild at Ajax Plant.

**COMPANY** \_\_\_\_\_

**ADDRESS** \_\_\_\_\_

**CITY** \_\_\_\_\_ **STATE** \_\_\_\_\_ **ZIP** \_\_\_\_\_

**Name of Authorized Person** \_\_\_\_\_ **PHONE NO.** \_\_\_\_\_

**AJAX**   
**ELECTRIC COMPANY**

Tomlinson & Tracey Roads  
Huntingdon Valley, Pa. 19006  
Telephone (215) 947-8500